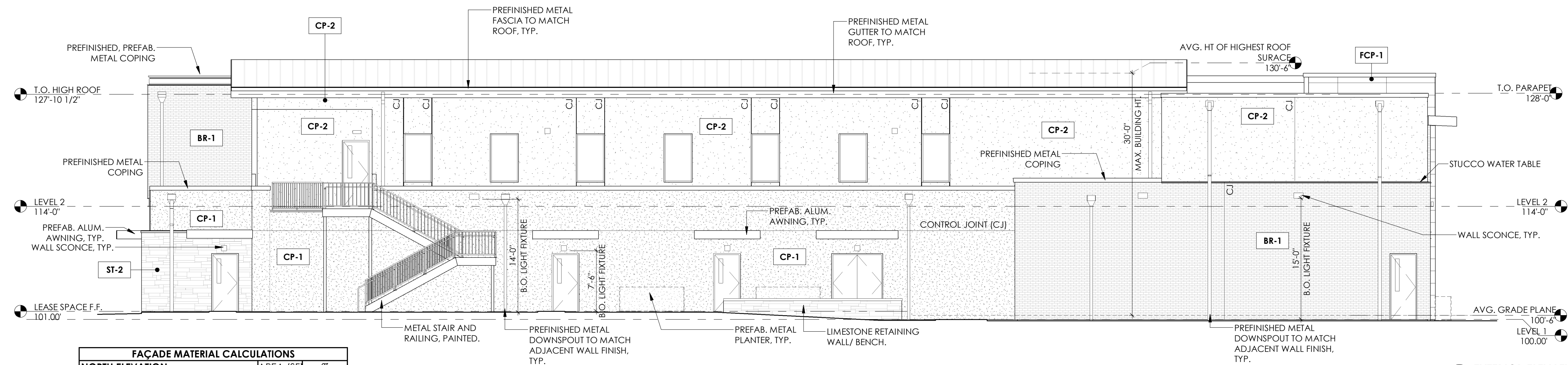
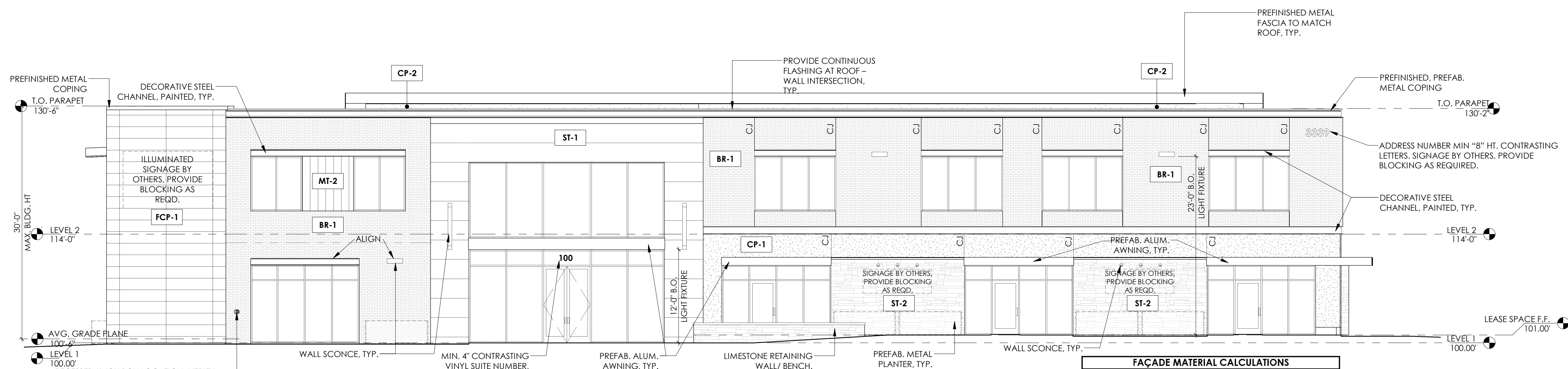


FAÇADE MATERIAL CALCULATIONS			
EAST ELEVATION		AREA (SF)	%
BR-1 BRICK VENEER		193.7	10.5%
ST-2 ROUGH LIMESTONE		349.1	18.9%
CP-1 & CP-2 STUCCO		905.1	49.0%
TOTAL GLAZING		398.2	21.6%
TOTAL VERTICAL FAÇADE		1,846.1	100.0%

FAÇADE MATERIAL CALCULATIONS		
WEST ELEVATION	AREA (SF)	%
FCP-1 FIBER CEMENT PANEL	228.5	10.7%
BR-1 BRICK VENEER	631.1	29.6%
CP-1 & CP-2 STUCCO	834.9	39.1%
TOTAL GLAZING	440.1	20.6%
TOTAL VERTICAL FAÇADE	2,134.6	100.0%



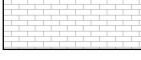

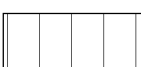
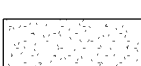

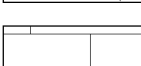

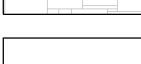

FAÇADE MATERIAL CALCULATIONS		
NORTH ELEVATION	AREA (SF)	%
BR-1 BRICK VENEER	1,010.5	23.5%
ST-2 ROUGH LIMESTONE	110.4	2.6%
CP-1 & CP-2 STUCCO	3,032.6	70.5%
TOTAL GLAZING	146.9	3.4%
TOTAL VERTICAL FAÇADE	4,300.4	100.0%




FAÇADE MATERIAL CALCULATIONS		
SOUTH ELEVATION	AREA (SF)	%
FCP-1 FIBER CEMENT PANEL	460.0	9.9%
BR-1 BRICK VENEER	1,569.7	33.9%
ST-1 SMOOTH LIMESTONE	472.0	10.2%
ST-2 ROUGH LIMESTONE	336.4	7.3%
CP-1& CP-2 STUCCO	329.0	7.1%
TOTAL GLAZING	1,462.2	31.6%
TOTAL VERTICAL FAÇADE	4,629.3	100.0%

CITY OF BRYAN ORDINANCE NO. 2074 - BUILDING DESIGN GUIDELINES	
CODE OF ORDINANCES, CHAPTER 62. LAND AND SITE DEVELOPMENT, ARTICLE X. BUILDING DESIGN	
62-682. BUILDING FRONTAGES	
SHADE & SHELTER - MIN. 6' DEPTH, MAX. 20 FT HIGH GLAZING ON BUILDING FACADES - MIN. VT 0.4 OR HIGHER	
62.683. BUILDING DESIGN OPTIONS 5,000 SF OR MORE - FOUR BASE POINTS	
OPTION	POINTS
FACADE ARTICULATION, 2 FACADES CHANGES OF TEXTURE OR MATERIAL	1
PRIMARY ENTRANCE DESIGN PROMINENT 3D FEATURES - ENTRY FRAME ENHANCED EXTERIOR LIGHT FIXTURES ARCHITECTURAL DETAILS - EXPOSED STEEL AS FRIEZE, METAL CORNICE	1
BUILDING MATERIALS 60% OF (3) MOST VISIBLE FACADES WITH MATERIALS FROM SET "A": NATURAL STONE, UNPAINTED BRICK, 3-COAT STUCCO, METAL PANELS	3
100% OF GLAZING ON GROUND FLOOR HAS A VLT OF 40% OR HIGHER	1
PRINCIPAL BUILDING ENTRANCE LOCATED UNDER A SHADE DEVICE, 6FT DEEP, 12' HIGH.	1
TOTAL POINTS	7

MATERIAL LEGEND

	BR-1	THIN BRICK, EQUAL TO ACME BRICK, ENGLISH COTTAGE, KENILWORTH, MODULAR - RUMBLED
	FCP-1	FIBER CEMENT PANELS EQUAL TO NICHIA, ARCHITECTURAL WALL PANELS, TUFFBLOCK MODERN SERIES, COLOR 1BD
	MT-2	METAL PANEL EQUAL TO BERRIDGE, L-PANEL 22 GA. 12" SMOOTH W/O GROOVES, FINISHED CHARCOAL GREY
	CP-1	CEMENT PLASTER STUCCO, 3-COAT SYSTEM, FINE TEXTURE, FINISH SW 7014 EIDER WHITE
	CP-2	CEMENT PLASTER STUCCO, 3-COAT SYSTEM, FINE TEXTURE, FINISH SW 7650 ELITE GRAY
	ST-1	SMOOTH COT LIMESTONE, ACME BRICK TEXAS CREAM HIRDED, A SIDE FINISHED, 30" TALL X 60" WIDE, ORIENTAL STACKED BOND
	ST-2	ROUGH LIMESTONE, EQUAL TO SALADO STONE, SONOMA, BUFF LUDERS COLOR.
	TPO-1	TPO ROOF SYSTEM 80 MIL, FULLY ADHERED, CARLISLE OR EQUAL, WHITE
	SSMR-1	METAL ROOF, 22 GA. ARCHITECTURAL METAL STANDING SEAM ROOF, BERRIDGE OR EQUAL, ZINC GRAY

206 S. WILD BASIN RD. BUILDING A, SUITE 200 AUSTIN, TX 78741 (512) 294-2210



RNL HOMES HQ
3339 UNIVERSITY DR E
BRYAN, TX

COPYRIGHT © 2025 ALL RIGHTS RESERVED
 THESE DESIGNS/ DRAWINGS ARE THE SOLE
 PROPERTY OF ALIGN AUSTIN ARCHITECTS
 LLC AND MAY NOT BE REPRODUCED IN ANY
 FORM, BY ANY METHOD, FOR ANY PURPOSES
 WITHOUT PREVIOUS WRITTEN PERMISSION

NOT FOR
REGULATORY
APPROVAL,
PERMITTING, OR
CONSTRUCTION

THIS DOCUMENT IS RELEASED FOR
THE PURPOSE OF INTERIM REVIEW
UNDER THE AUTHORITY OF
ARCHITECT:

60% BID SE
EXTERIOR ELEVATIONS

HEET: A201

PROJECT NO: 2502
DRAWN BY: M
DATE: 12.10.2021
PROJECT MGR: M